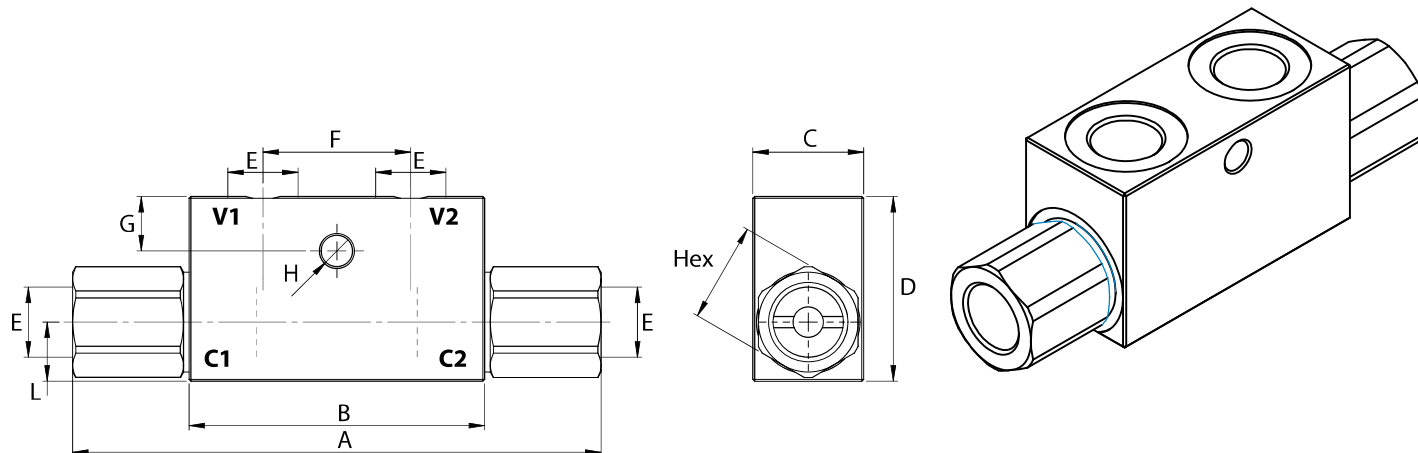
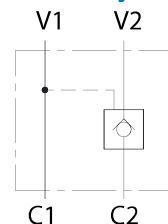


Dimensions

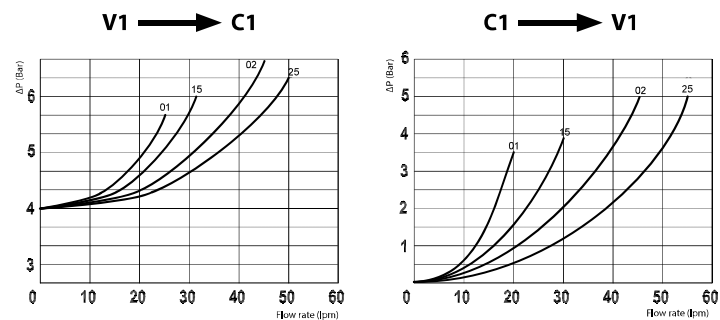


| Size | A   | B  | C  | D  | E BSP | F  | G  | H   | L  | Hex | Weight kg |
|------|-----|----|----|----|-------|----|----|-----|----|-----|-----------|
| 01   | 117 | 68 | 30 | 40 | 1/4   | 38 | 7  | 7   | 13 | 24  | 0,67      |
| 15   | 117 | 68 | 30 | 40 | 3/8   | 38 | 7  | 7   | 13 | 24  | 0,63      |
| 02   | 143 | 80 | 30 | 50 | 3/8   | 40 | 15 | 8,5 | 16 | 27  | 0,96      |
| 25   | 143 | 80 | 30 | 50 | 1/2   | 40 | 15 | 8,5 | 16 | 27  | 0,89      |

Hydraulic Symbol



Curves



Features

| Size                    | 01    | 15    | 02  | 25  |
|-------------------------|-------|-------|-----|-----|
| Max Pressure (bar)      | 350   | 350   | 300 | 300 |
| Max Flow (lpm)          | 25    | 30    | 45  | 50  |
| Pilot Ratio             | 1:4.6 | 1:4.6 | 1:4 | 1:4 |
| Cracking Pressure (bar) | 4     | 4     | 4   | 4   |

Materials: Zinc plated steel body, hardened steel inner parts.

Ordering Code

LVST --

|    | Size BSP |
|----|----------|
| 01 | 1/4      |
| 15 | 3/8      |
| 02 | 3/8      |
| 25 | 1/2      |

Ordering Code Example: LVST15 = 3/8 BSP, 30 lpm.