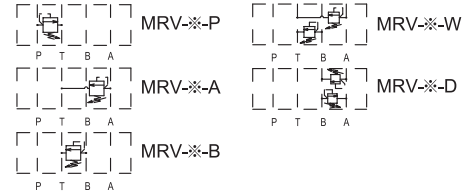




Modular Relief Valve

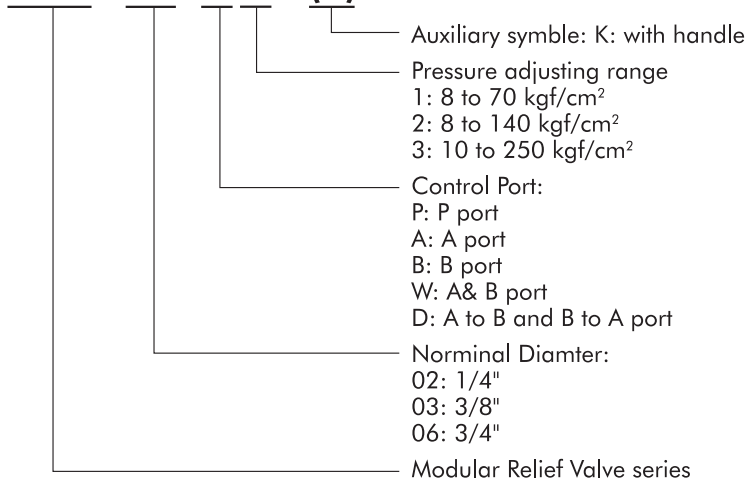
Features:

1. MRV series modular relief valves provides maximum pressure control of hydraulic circuit.
2. Wide range of operating pressure, adjusting range from 8 to 250 kgf/cm².
3. Wide range of applicability, maximum working pressure 250 kgf/cm².



HOW TO ORDER

MRV - 02 - P-1 - (K)



Handling:

1. For using as a safety valve, setting the pressure that is higher than the required circuit pressure.
2. Make sure that the tank port back pressure is not greater than 2 kgf/cm².
3. When flow rate is too small may cause the pressure instability, we recommend flow rate as following:
 - 02: No less than 6 L/min.
 - 03: No less than 8 L/min.
 - 06: No less than 10 L/min.

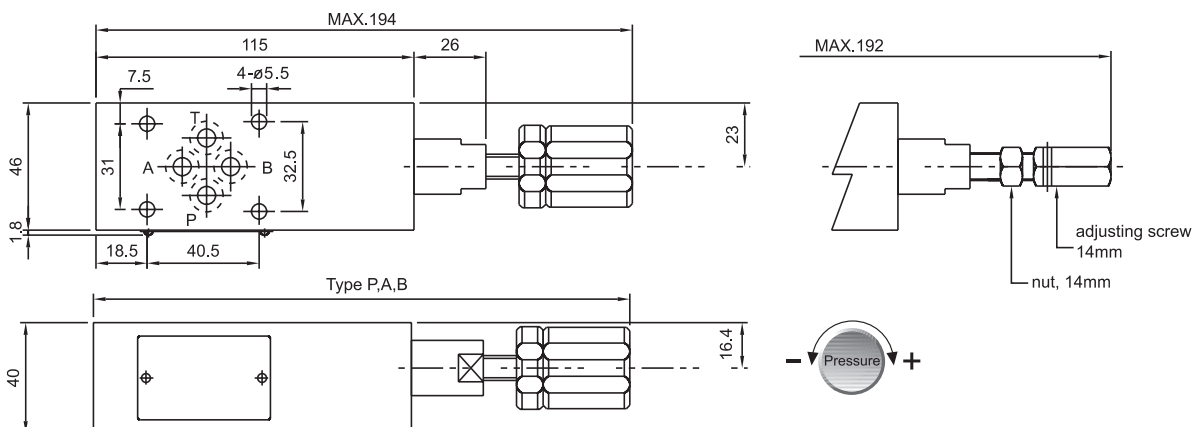
SPECIFICATIONS

| Model No. | Maximum Working pressure kgf/cm ² | Pressure adj. Range kgf/cm ² | Maximum flow l/min | Weight kgs | Gasket surface Dimensions |
|----------------------|--|---|--------------------|------------|---------------------------|
| MRV-02-P -A -B | 250 | 1: 8 to 70 2: 8 to 140 3: 10 to 250 | 50 | 1.7 | ISO 4401-03-02-0-94 |
| MRV-02-W -D | | 1: 8 to 70 2: 8 to 140 3: 10 to 250 | | | |
| MRV-03-P -A -B | 250 | 1: 8 to 70 2: 8 to 140 3: 10 to 250 | 100 | 3.6 | |
| MRV-03-W -D | | 1: 8 to 70 2: 8 to 140 3: 10 to 250 | | | |
| MRV-06-P -A -B | 250 | 1: 8 to 70 2: 8 to 140 3: 10 to 250 | 180 | 12.0 | ISO 4401-08-07-0-94 |

INSTALLATION DIMENSIONS:

UNIT: mm

MRV-02-P. A. B



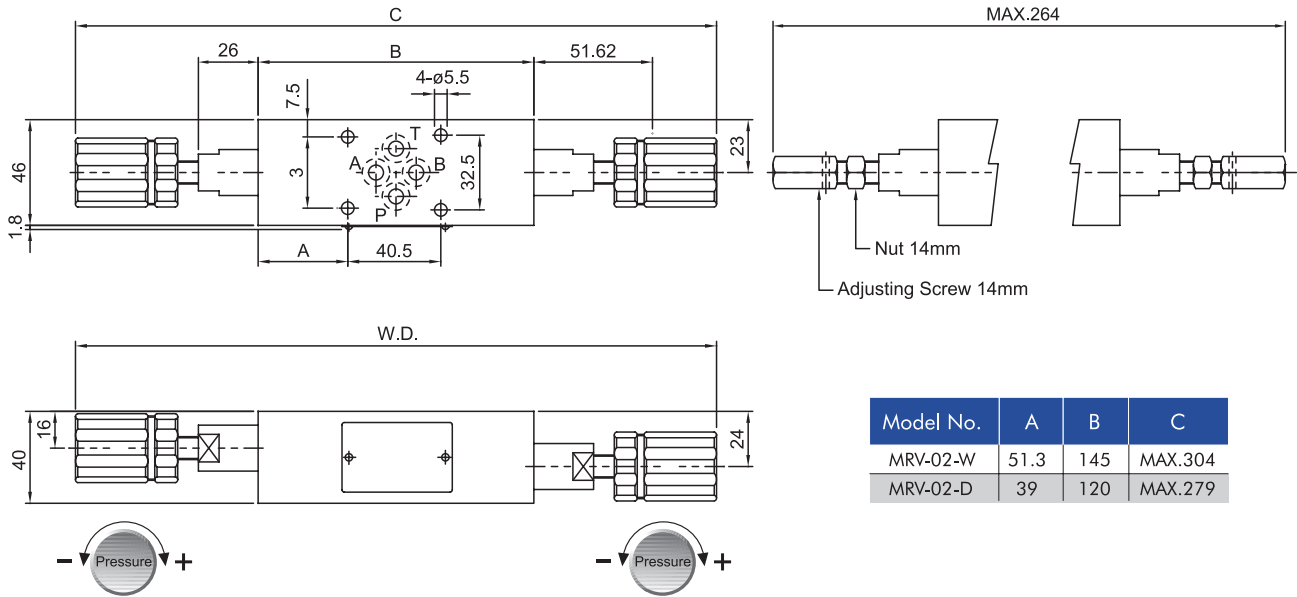


Modular Relief Valve

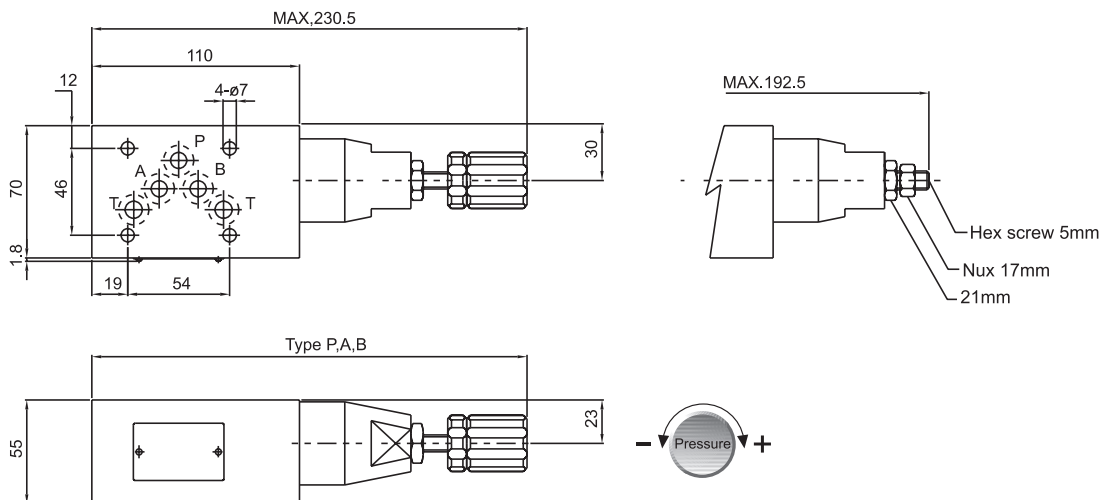
■ INSTALLATION DIMENSIONS:

UNIT: mm

MRV-02-W.D



MRV-03-P. A. B



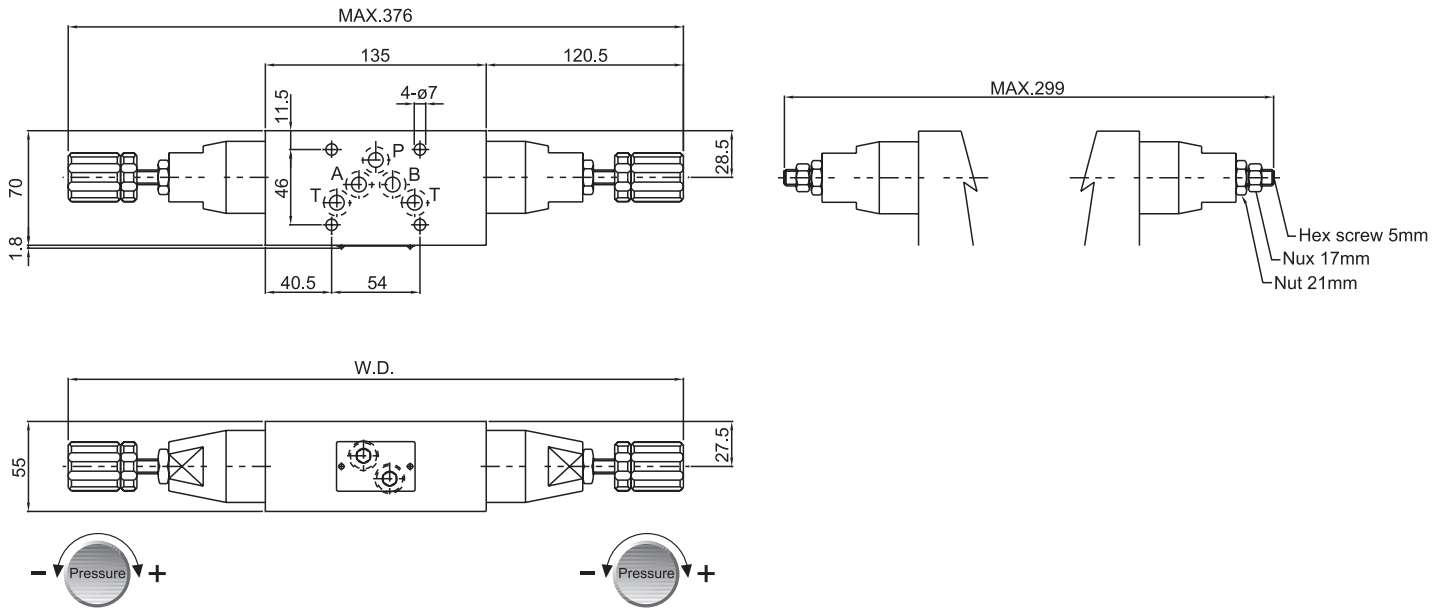


Modular Relief Valve

■ INSTALLATION DIMENSIONS:

UNIT: mm

MRV-03-W.D



MRV-06-P. A. B

